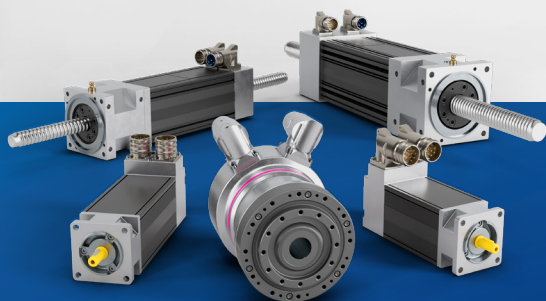


EN



GiMotor

The open answer to every mould movement control solution



WIDE COMPATIBILITY
with servo motors and linear
actuators on the market

Advanced control of servo motors/linear actuators

Efficiency and performance

GiMotor system represents a complete solution for the control of servo motors/linear actuators, combining ease of use, advanced performance and a compact design.



Custom movements

Customisable management of any mould movement.

Real-time parameters

Ability to change operating parameters in real time, to quickly adapt to new production needs.

Ease of use

Intuitive user interface, designed to simplify operations and reduce learning time.

Needs and opportunities

GiMotor was born from the need to work in environments where the presence of contaminants is not acceptable, bringing greater reliability (suitable for clean rooms).

Direct and recessable high-precision planetary rotation in the mold



The GiMotor system is particularly suitable for replacing traditional hydraulic jacks to optimise productivity and maintain high quality standards.

GiMotor Light

Control unit designed for a single servo motor/linear actuator. Its compactness allows it to be easily accommodated even in narrow spaces and the integrated 7" color touch screen display allows the creation of programs and their modification in a friendly way. Can be integrated into the company network, it allows you to remote the display also on the press panel (VNC server).



1 output



Remote Connection



Industry 4.0

GiMotor

The modular control unit allows the management of multiple servo motors/linear actuators in plastic moulds. It consists of a control module and one or more 2-way servo modules and a 10" color touch screen monitor terminal. The trolley allows you to easily move the entire control unit in each direction. It can be networked to all control systems and allows you to remote the display also on the press panel (VNC server).



Modular



Transportable



2 or 4 outputs



Remote Connection



Industry 4.0

Model	GiMotor-2	GiMotor-4	GiMotor-Light
No. of servo modules	1	2	1
Servo number per module	2	2	1
Matching Servo	GM07M – GM07G – GM10G		GM07M – GM07G
Maximum servo rated torque	9Nm	9Nm	9Nm
Rated servo speed	3000 rpm		2000 rpm
Expandable	Yes	No	Yes
Cable length between modules	5m	5m	-
Servo management	Single – contemporary – interpolated		-
Free Programming	50 steps		-
Inputs for servo limit switch	2	4	2
Press interface I/O	7 Inputs + 6 Outputs		5 Inputs + 4 Outputs
Safety inputs open	2		2
Power supply	3x380-400v or 2x200-240v 50/60Hz		2x200-240v 50/60Hz
Working temperature	from 5°C to 50°C		
Display	Mobile 10" color touch screen		Fixed 7" color touch screen
USB port	1 on mobile terminal		
Ethernet	1 RJ45 on control module		
Ethernet services	VNC server / FTP server		
Programming	Fixed cycles selectable or free		Fixed with programmable quotas
Number of archivable programs	Infinite		
Available in the following languages	English – Italian		
Modules dimensions	L340 x P340 x h255 mm		
Dimensions on trolley	L450 x P480 x h1255 mm		
Control module weight	10 Kg		
Servo module weight	12 Kg		-
Cart total weight	40 Kg	65 Kg	-

Flexible solutions for your system

Auxiliary equipment

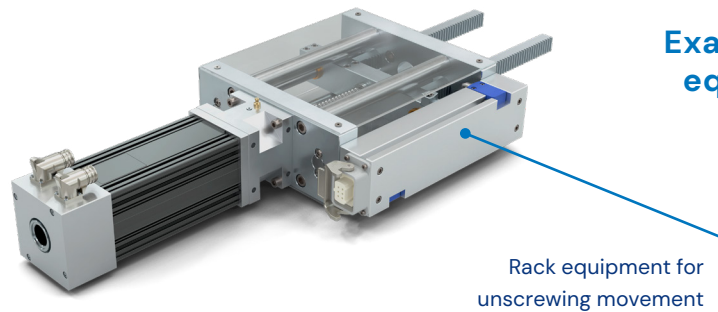
We offer a tailor-made service, sizing the motors for the required application, designing the movement equipment to be connected to the mould, thus providing a complete project that the customer can decide to carry out independently or entrust to us.



Custom project development

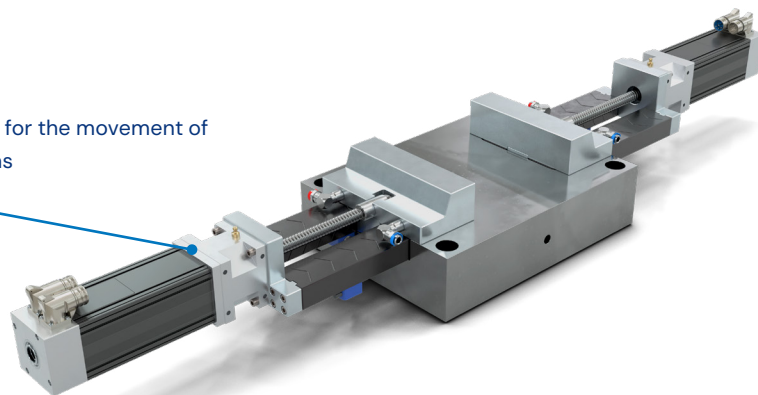
Making your own equipment

Examples of equipment



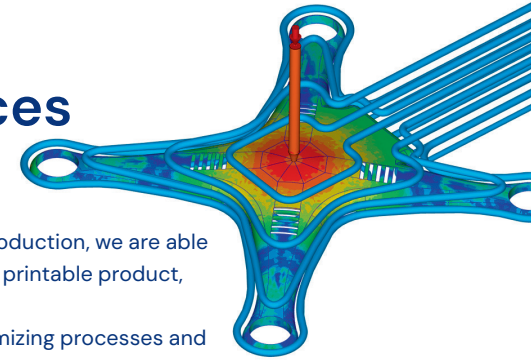
Rack equipment for unscrewing movement

Equipment for the movement of side wagons



The company

Engineering and Simulation Services



From the idea of the product to the start of production, we are able to support companies through the design of a printable product, design, simulation and analysis.

The goal remains that of shortening time, optimizing processes and effectively using resources in order to contain costs.

3 good reasons to choose Moulding Devup

1. Experience

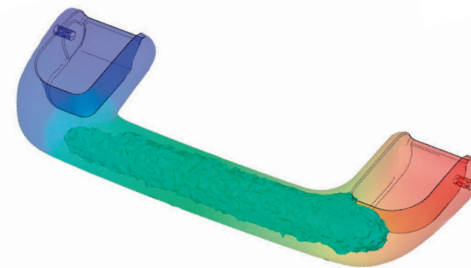
The proven experience of more than thirty years in the study and design of multi-cavity moulds for the medical, food, packaging and cosmetic sectors, allows our technical department to support designers and stampers in the choice and best application of motors and movement equipment. We are able to size the replacement of hydraulic systems with electrical systems.

2. One supplier

We produce the control units and write the software. This translates into a solution open to any needs in addition to those already implemented in standard solutions.

3. Time and cost

Our DNA allows us to immediately relate to customer issues, identify a relevant solution, calculate costs and keep delivery times tight.



Moldex3D
MOLDING INNOVATION

Learn more
 mouldingdevup.com

 mouldingdevup.com

Galvagni Moulding Devup s.r.l.
via Marco Corner 2 - 36016 Thiene (VI)
+39 0445 513005
info@mouldingdevup.com
www.mouldingdevup.com



Favorite collaborator of Moldex Italy

Moldex3D
MOLDING INNOVATION